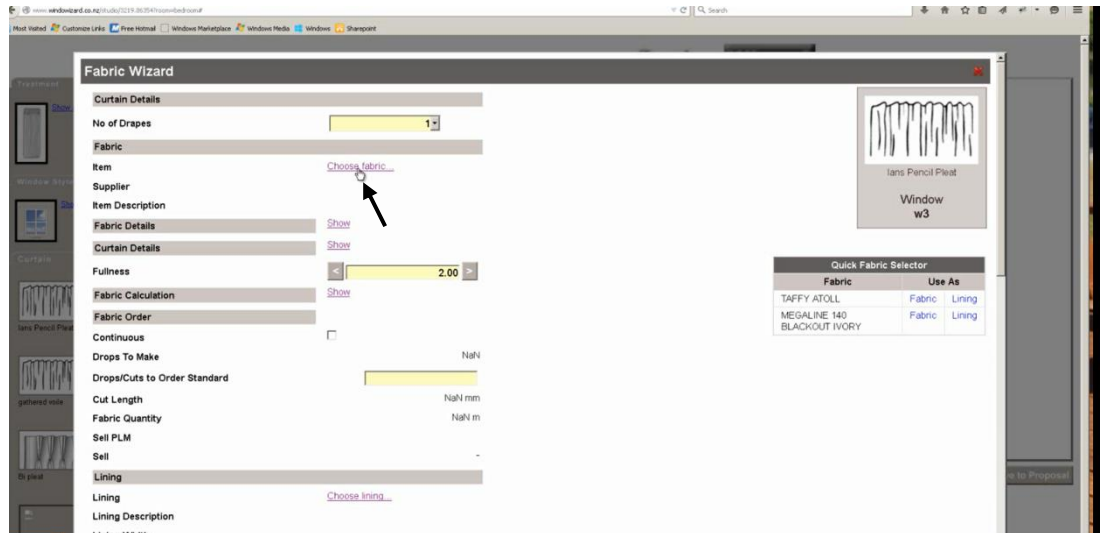


# Adding a Non-Licence Fabric or Colour in the Design Wizard

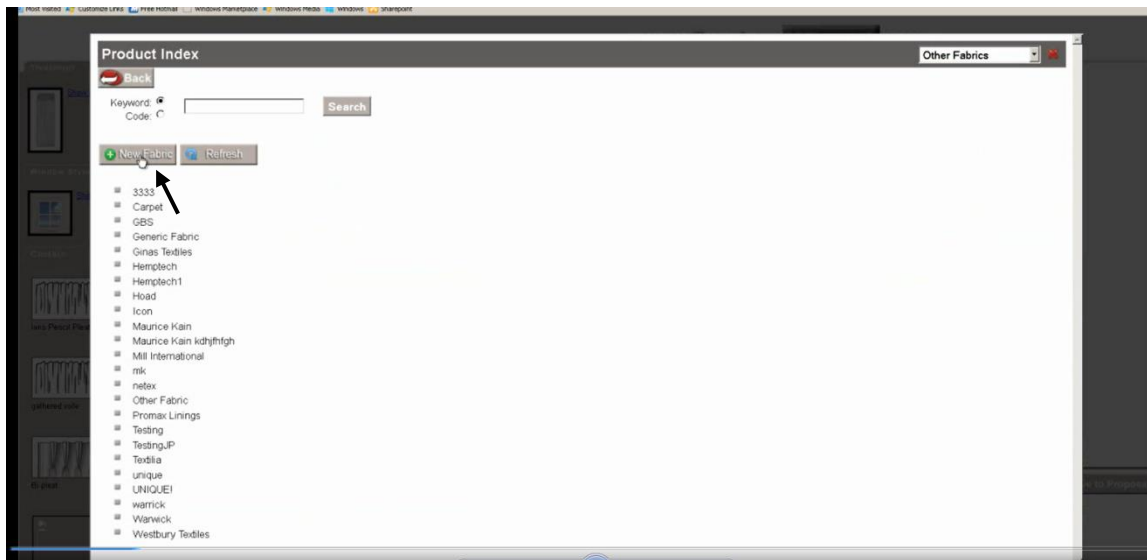
Select 'Choose fabric'



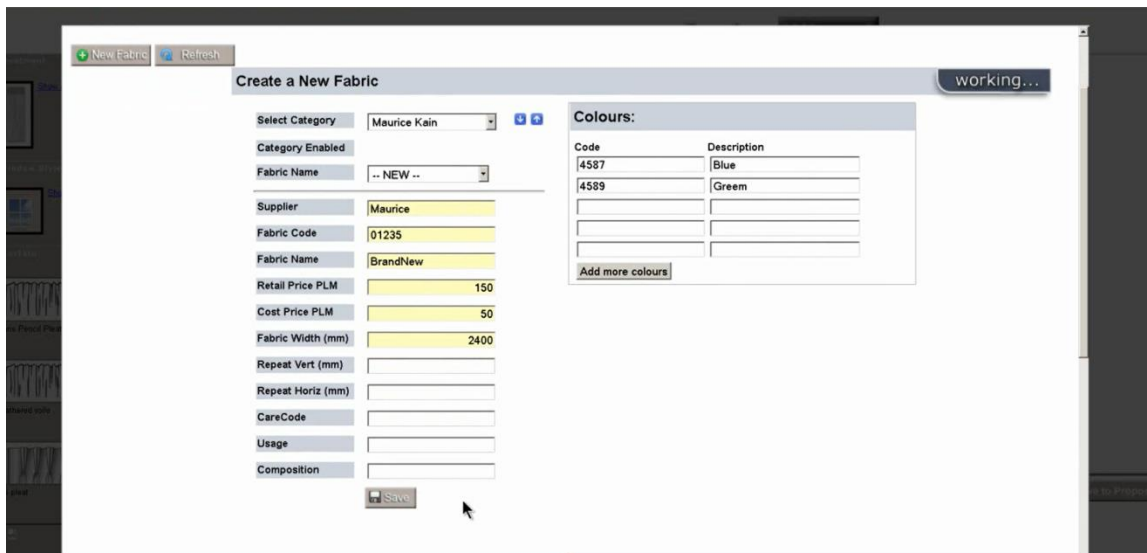
Then select 'Other Fabrics' from the drop down menu on the right hand side of the screen



Now select 'New Fabric'



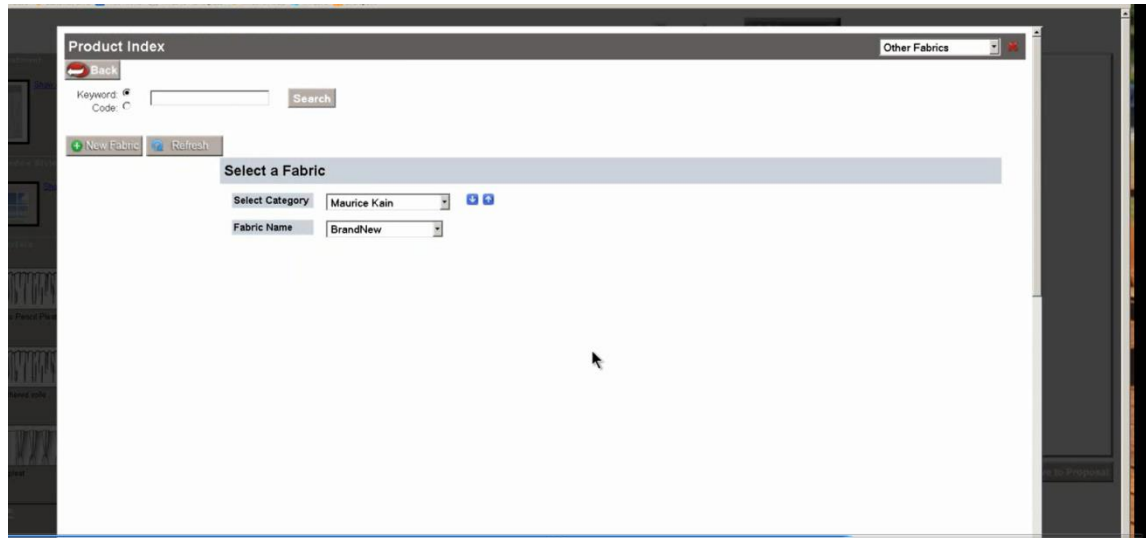
Select the category for the fabric and then select 'NEW' for the fabric name. Fill out the fabric details accurately and then press 'Save'



If there is a colour which isn't listed and you need to add it ..

Again, click on **'New Fabric'**

Then select the fabric category and choose the Fabric name



Add in the new **colour code** and **description** on the right hand side and press **'Save'**

